

NOTA:

Sua Puma aceita os cartuchos dos calibres recomendados na tabela ao lado, de acordo com o modelo, evitando entretanto, balas com ogivas completamente jaqueadas pontiudas (F.M.C. Full Metal Case). O uso dessa ou de qualquer outra munição não recomendada é extremamente perigoso e Anadeo Rossi S.A. não assumirá responsabilidade por qualquer dano resultante do uso de munição inadequada.

CARACTERÍSTICAS/SPECIFICATIONS

Modelo Model	Calibre Caliber	Capacidade Capacity	Comp. Cano Barrel Length	Comp. Total Overall Length	Peso Approx. Weight
77-775	38 SPL	10	20" (508 mm)	37" (949 mm)	(2800 g)
67	357 Magnum 38 SPL	"	"	"	"
65	44-40 Win	"	"	"	(2630 g)
65M	44 Magnum	"	"	"	"

NOTE

Your Puma will accept cartridges indicated in "caliber" at the table beside. The use of any other ammunition is extremely dangerous, and Anadeo Rossi S.A. will assume no responsibility for any damage or injury resulting from the use of incorrect ammunition.

FUNCIÓNAMENTO

- Para carregar: O munição é feito pela janela lateral no lado direito da arma, pressionando a tampa e introduzindo a munição conforme fosse colocar na câmara.
- Armar: Movimentar a alavanca inferior com a mão direita, normalmente, no sentido para a frente e retornando para a posição inicial.
- Disparar: Utilize o aparelho de pontaria para a visada do alvo e acione levemente o gatilho.
- Regulagem da alça de mira: No plano horizontal leve batidas para a esquerda ou direita; No plano vertical desloca-se o graduador para frente ou para trás conforme o desvio seja para cima ou para baixo.

PARA CARREGAR M. 775

Retire o tubo carregador parcialmente até descobrir a fenda e introduza quantos cartuchos quiser. Empurre-o de volta e fixe-o girando na ranhura. A arma está pronta para o disparo. Acione a alavanca com movimento alternado e puxe o gatilho. A extração do cartucho deflagrado e a reposição por outro novo processa-se automaticamente.

MANUTENÇÃO

A limpeza e lubrificação são essenciais para a conservação e eficiência da arma. Para a lubrificação do mecanismo utiliza-se um óleo fino mineral, isento de ácido ou água. Para a limpeza do cano utilize uma vareta de bronze com escova ou pano, embebido em óleo fino mineral.

SEGURANÇA

- Esta arma possui segurança contra disparos acidentais.
- Culatra aberta ou mal fechada, fica bloqueado e percussor pela cabeça da alavanca, evitando a percussão da espoleta.
- Depois de dois ferrolhos transversais de aço que travam a culatra, suportando toda a pressão de recuo.
- Depois da posição de descanso do cão sem tocar no percussor.
- Ao segurar a arma examine se está carregada.
- Não aponte a arma para qualquer pessoa.
- Antes de apertar o gatilho esteja certo de seu alvo e de que tenha boa área de segurança ao redor.
- Cuidado com os rícochetes - Não atire na água ou superfícies que possam desviar o tiro.
- Tome cuidado com obstruções no cano.

TO FILL THE MAGAZINE

With the bullet of each cartridge, press the spring cover inward and push the cartridges forward nearly to end of spring cover, pushing the last one fully forward until the cover closes.

TO OPERATE THE GUN

Swing the finger-lever forward then back. The gun is now loaded and cocked. For safe carrying, let the hammer carefully down to half-cock by placing thumb on hammer and exerting pressure on trigger sufficient to release full-cock engagement. Then IMMEDIATELY remove finger from trigger. Permit hammer to move forward under control of thumb half-cock position. To fire, draw the hammer back to full-cock.

NOTES

The magazine takes ten (10) cartridges. By placing a cartridge in the chamber before filling the magazine, eleven (11) shots are available. Be sure to remove all excess grease from interior of barrel and mechanism before firing.

LOADING M. 775

Pull out inside magazine tube until the loading port is clear and place the cartridges into the magazine.

Replace the tube in its position. The rifle is now ready for shooting.

Push the lever in an alternated movement and press the trigger.

The gun is now cocked and ready to fire on a pull of the trigger.

The ejection of the spent case and ready replacement with a fresh cartridge is done automatically on a subsequent operation of the forend.

TO DISASSEMBLE THE GUN

Unscrew the tang screw and remove butt stock. Take out finger lever pin stop screw and drive out finger-lever pin. Remove link pin screw and link pin. Remove finger lever and link. Unscrew the right and left hand carrier screws and remove carrier.

With hammer let all the way down, remove main spring screw and main spring (CAUTION: Do not move main spring strain screw as this changes hammer blow and trigger pull).

Remove hammer screw and, holding up safety catch, remove the hammer. Drive out lower tang, to the rear, using brass rod or wood block. Remove locking bolt and breech bolt.

Remove spring cover screw and spring cover. Remove carrier spring screw and carrier spring. Cartridge guides may be cleaned in place - removal and replacement may result in improper feeding.

Remove spring cover screw and spring cover. Remove carrier spring screw and carrier spring. Cartridge guides may be cleaned in place - removal and replacement may result in improper feeding.

Remove spring cover screw and spring cover. Remove carrier spring screw and carrier spring. Cartridge guides may be cleaned in place - removal and replacement may result in improper feeding.

Remove spring cover screw and spring cover. Remove carrier spring screw and carrier spring. Cartridge guides may be cleaned in place - removal and replacement may result in improper feeding.

Remove spring cover screw and spring cover. Remove carrier spring screw and carrier spring. Cartridge guides may be cleaned in place - removal and replacement may result in improper feeding.

Remove spring cover screw and spring cover. Remove carrier spring screw and carrier spring. Cartridge guides may be cleaned in place - removal and replacement may result in improper feeding.

Remove spring cover screw and spring cover. Remove carrier spring screw and carrier spring. Cartridge guides may be cleaned in place - removal and replacement may result in improper feeding.

Remove spring cover screw and spring cover. Remove carrier spring screw and carrier spring. Cartridge guides may be cleaned in place - removal and replacement may result in improper feeding.

Remove spring cover screw and spring cover. Remove carrier spring screw and carrier spring. Cartridge guides may be cleaned in place - removal and replacement may result in improper feeding.

Remove spring cover screw and spring cover. Remove carrier spring screw and carrier spring. Cartridge guides may be cleaned in place - removal and replacement may result in improper feeding.

Remove spring cover screw and spring cover. Remove carrier spring screw and carrier spring. Cartridge guides may be cleaned in place - removal and replacement may result in improper feeding.

Remove spring cover screw and spring cover. Remove carrier spring screw and carrier spring. Cartridge guides may be cleaned in place - removal and replacement may result in improper feeding.

Remove spring cover screw and spring cover. Remove carrier spring screw and carrier spring. Cartridge guides may be cleaned in place - removal and replacement may result in improper feeding.

Remove spring cover screw and spring cover. Remove carrier spring screw and carrier spring. Cartridge guides may be cleaned in place - removal and replacement may result in improper feeding.

Remove spring cover screw and spring cover. Remove carrier spring screw and carrier spring. Cartridge guides may be cleaned in place - removal and replacement may result in improper feeding.

Remove spring cover screw and spring cover. Remove carrier spring screw and carrier spring. Cartridge guides may be cleaned in place - removal and replacement may result in improper feeding.

Remove spring cover screw and spring cover. Remove carrier spring screw and carrier spring. Cartridge guides may be cleaned in place - removal and replacement may result in improper feeding.

Remove spring cover screw and spring cover. Remove carrier spring screw and carrier spring. Cartridge guides may be cleaned in place - removal and replacement may result in improper feeding.

Remove spring cover screw and spring cover. Remove carrier spring screw and carrier spring. Cartridge guides may be cleaned in place - removal and replacement may result in improper feeding.

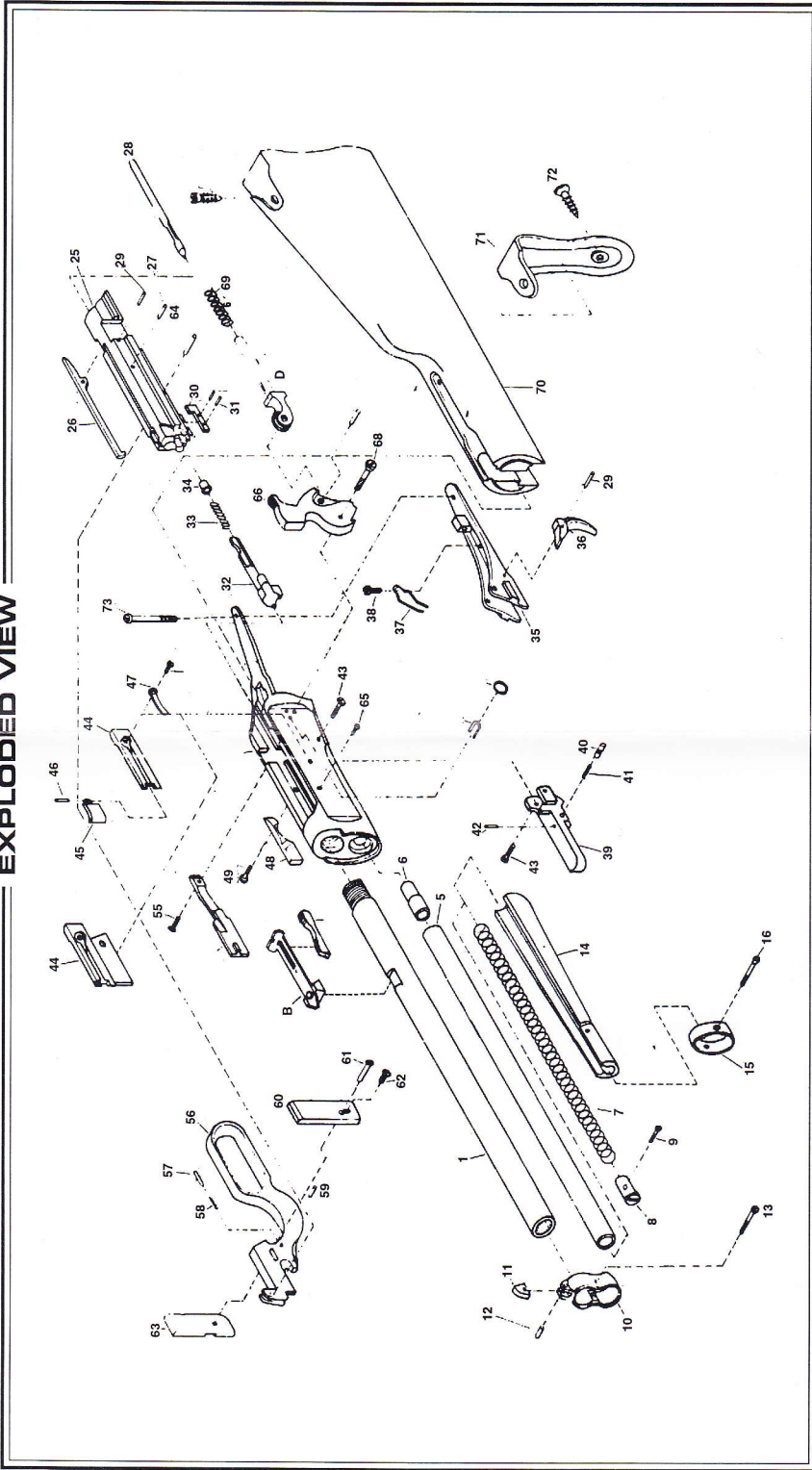
Remove spring cover screw and spring cover. Remove carrier spring screw and carrier spring. Cartridge guides may be cleaned in place - removal and replacement may result in improper feeding.

ASSEMBLE in reverse order

WARNING

The use of Full Metal Jacketed Bullets in rifles with tubular magazines is an unsafe practice. Cartridges in a magazine tube are aligned in a manner that permits the bullet point to be in direct contact with the primer of the abutting cartridge; therefore, recoil inertia may be sufficient to set off the cartridges in the magazine. DO NOT, UNDER ANY CIRCUMSTANCES, USE AMMUNITION HAVING FULL METAL JACKETED BULLETS.

EXPLODED VIEW



Nº	PART NAME	Nº	PART NAME
1	Barrel	39	Carrier
2A	Receiver with saddle ring	40	Carrier stop
5	Magazine tube	41	Carrier stop spring
6	Magazine follower	42	Carrier stop pin
7	Magazine spring	43	Carrier screw
8	Magazine plug	44	Cartridge guide, left
9	Magazine plug screw	45	Cartridge stop
10	Magazine ring	46	Cartridge stop join pin
11	Front sight pin	47	Cartridge stop spring
12	Front sight	48	Cartridge stop guide, right
13	Magazine ring screw	49	Cartridge guide screws
14	Forearm	50	Spring cover
15	Forearm tip	51	Spring cover screw
16	Forearm tip screw	52	Trigger lever
B	Rear sight	53	Friction stud
*	Rear sight base	54	Friction stud spring
20	Safety sight screw	55	Friction stud stop pin
25	Elevator	56	Locking bolt, left
26	Breechbolt	57	Locking bolt pin
27	Extractor	58	Locking bolt pin stop screw
28	Firing pin	59	Locking bolt, right
29	Firing pin stop pin	60	Lever & breechbolt pin
30	Ejector spring stop	61	Hammer
31	Ejector spring stop pin	62	Main spring rod
32	Ejector	63	Main spring rod pin
33	Ejector spring	64	Hammer screw
34	Ejector collar	65	Main spring
35	Lower tang	66	Stock
36	Trigger	67	Butt plate
37	Trigger spring	68	Butt plate screw
38	Trigger spring screw	69	Upper tang screw

SPECIFICATIONS		
MODEL	CALIBER	BARREL LENGTH/CAPACITY(ROUNDS)
I RIFLE	.357 MAG .44-40 WIN .45 COLT	20"/10 or 24 1/4"/12
I CARBINE	.357 MAG .44-40 WIN .45 COLT	20"/10
II RIFLE	.357 MAG .44-40 WIN .45 COLT	20"/10 or 24 1/4"/12
II CARBINE	.357 MAG .44-40 WIN .45 COLT	20"/10
III RIFLE	.357 MAG .44-40 WIN .45 COLT	20"/10 or 24 1/4"/12
III CARBINE	.357 MAG .44-40 WIN .45 COLT	20"/10